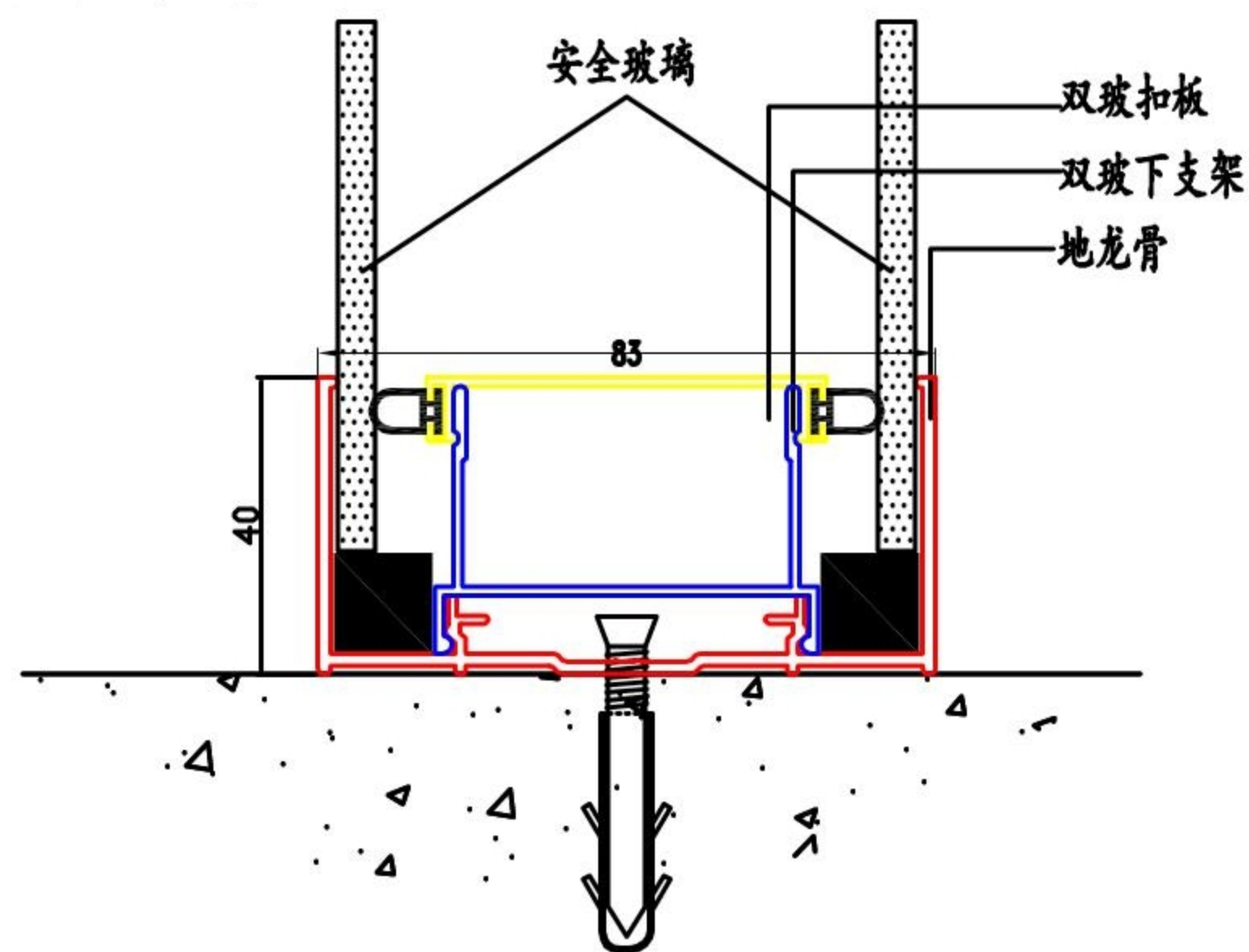


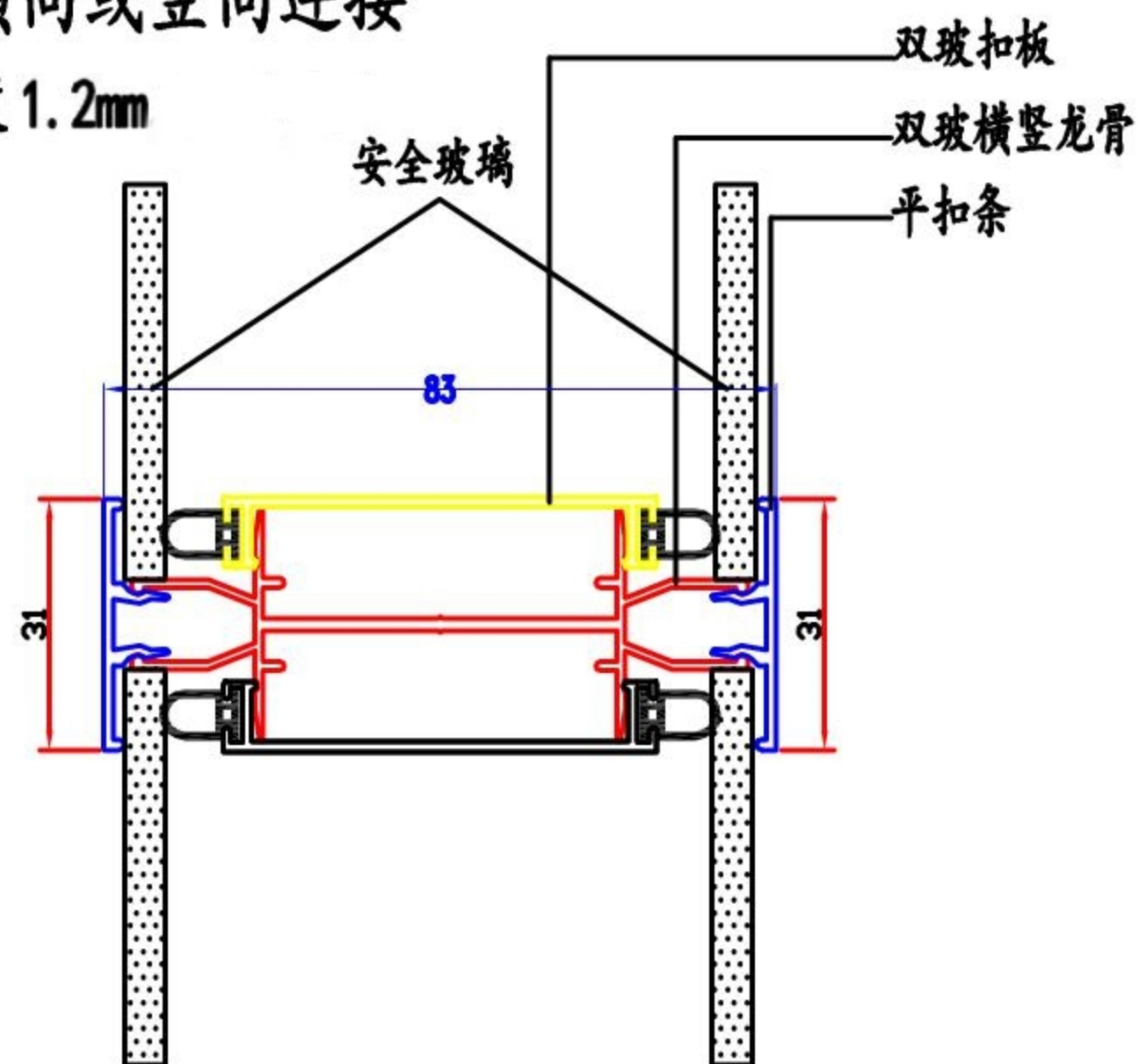
# 隔墙与地面连接

地龙骨高度有40

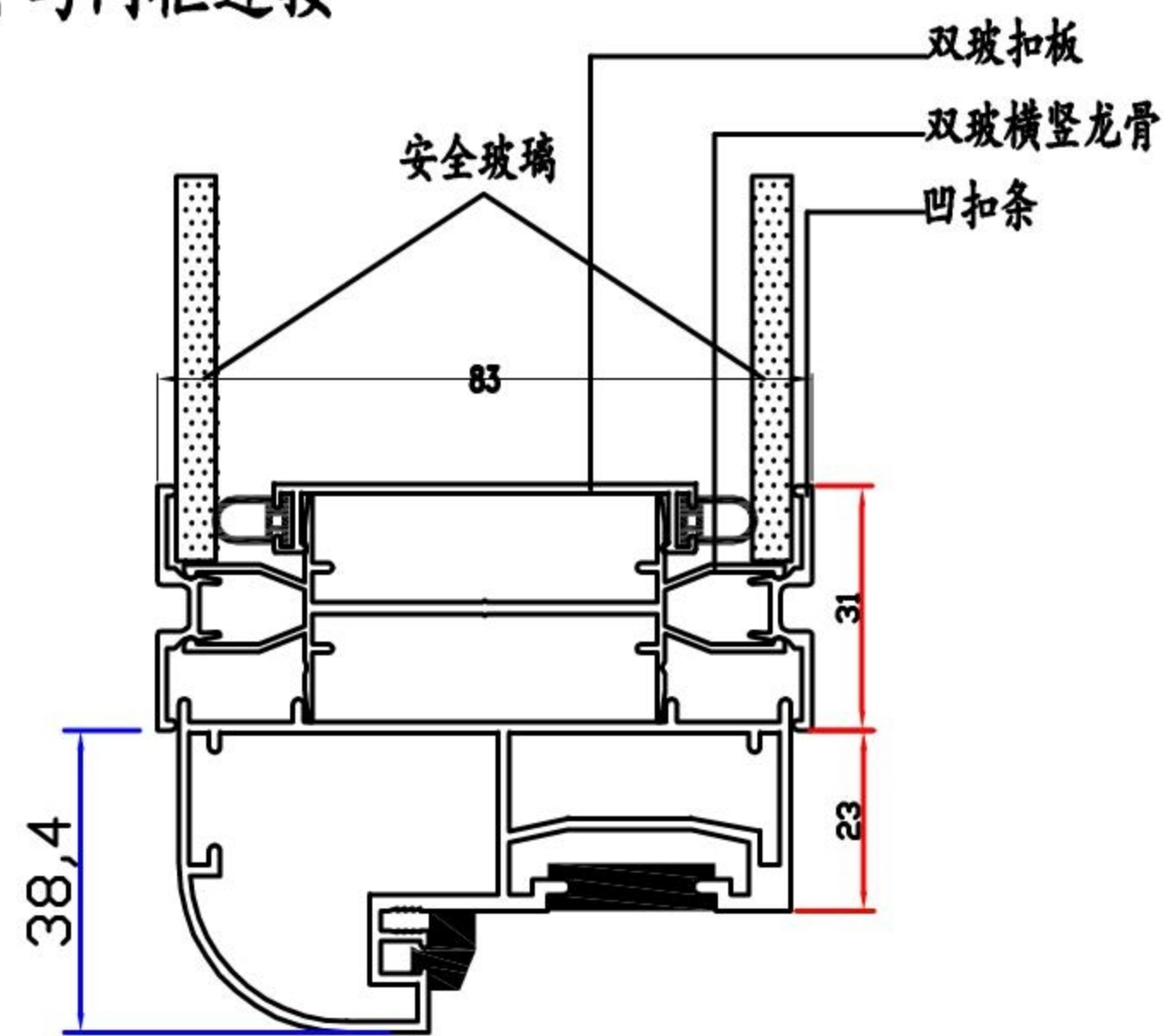


# 双玻龙骨横向或竖向连接

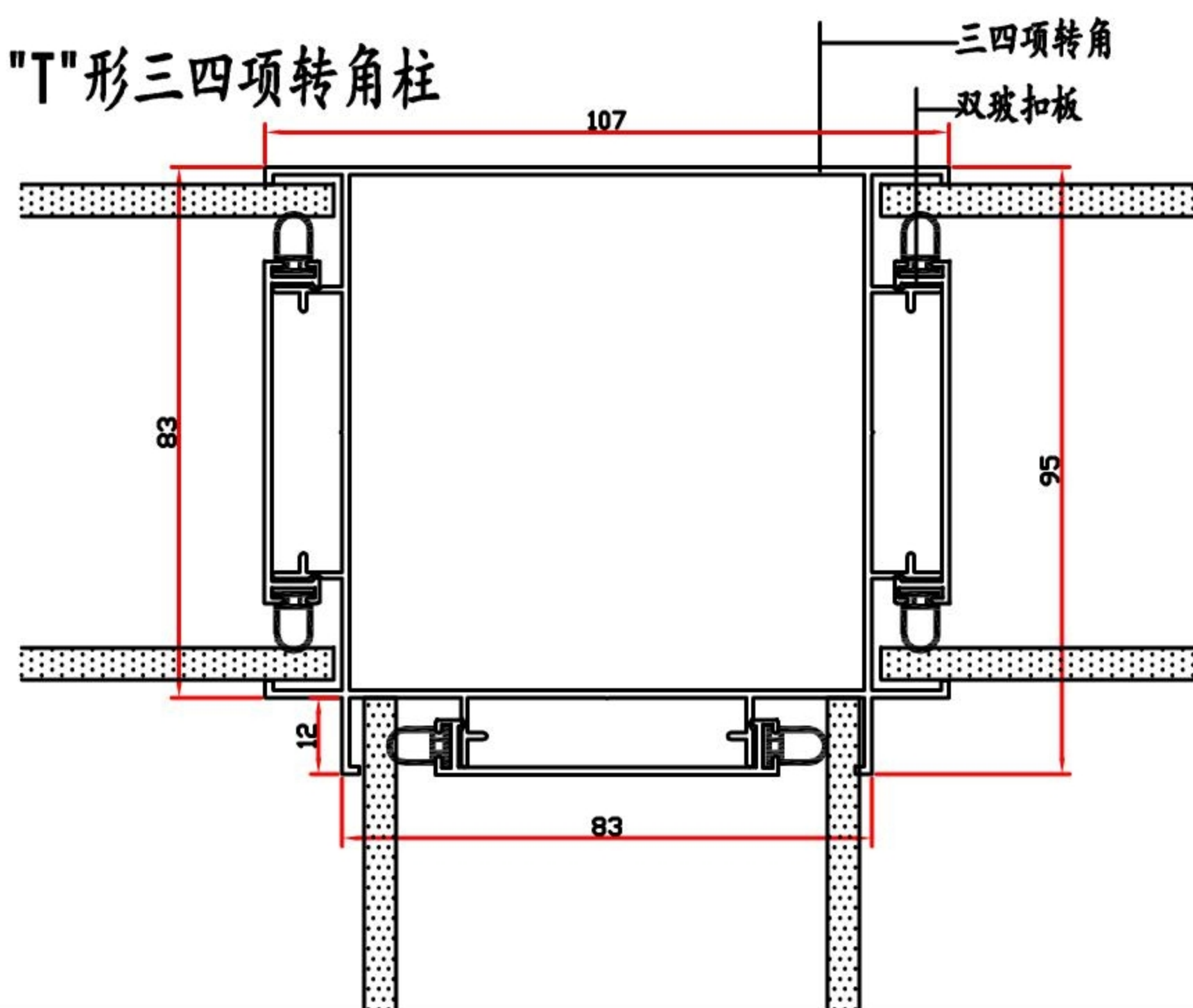
横竖龙骨厚度 1.2mm



# 双玻龙骨与门框连接

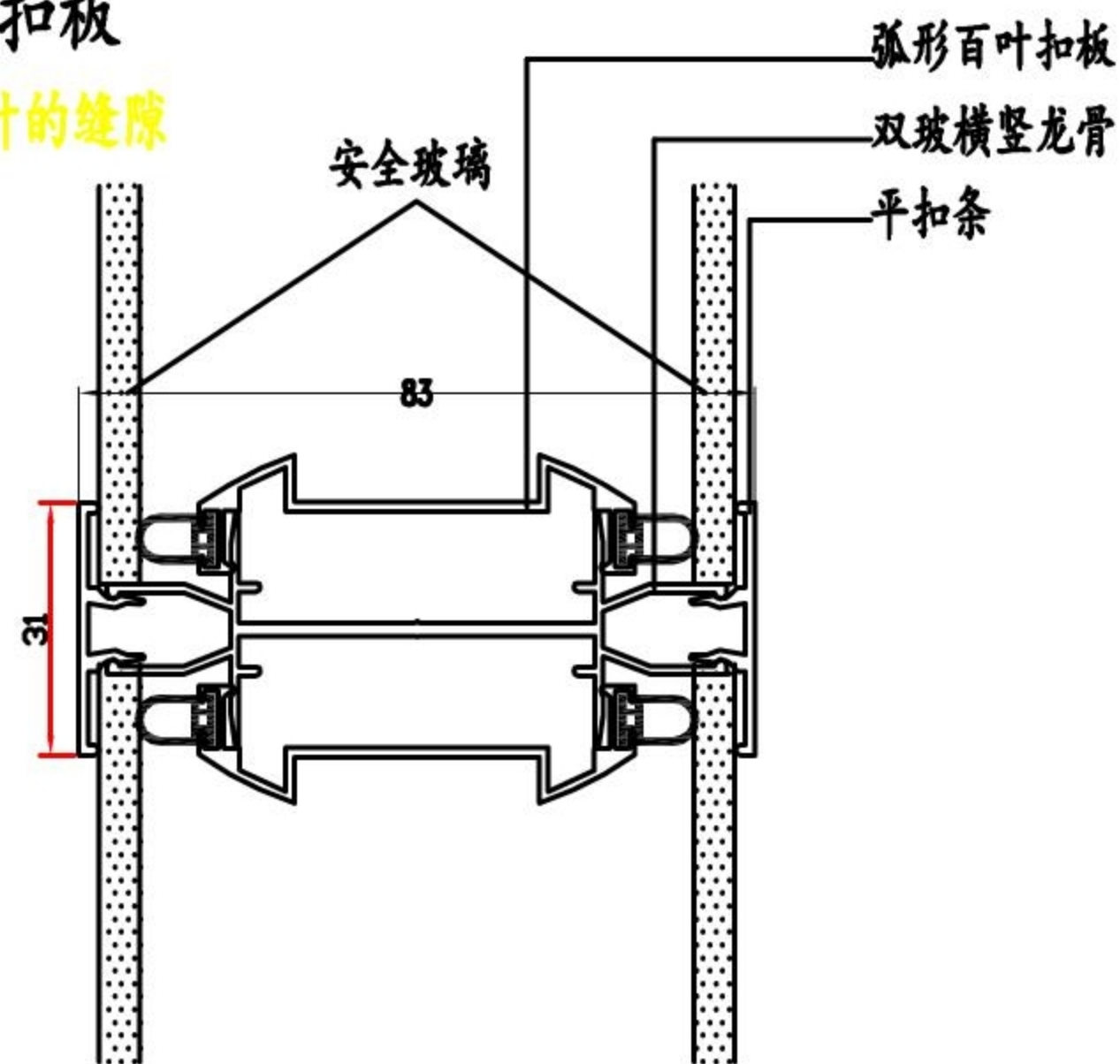


# "T"形三四项转角柱



# 弧形百叶扣板

隐藏竖向百叶的缝隙



# 圆柱与圆柱连接件,

可实现90度与270度间旋转。

